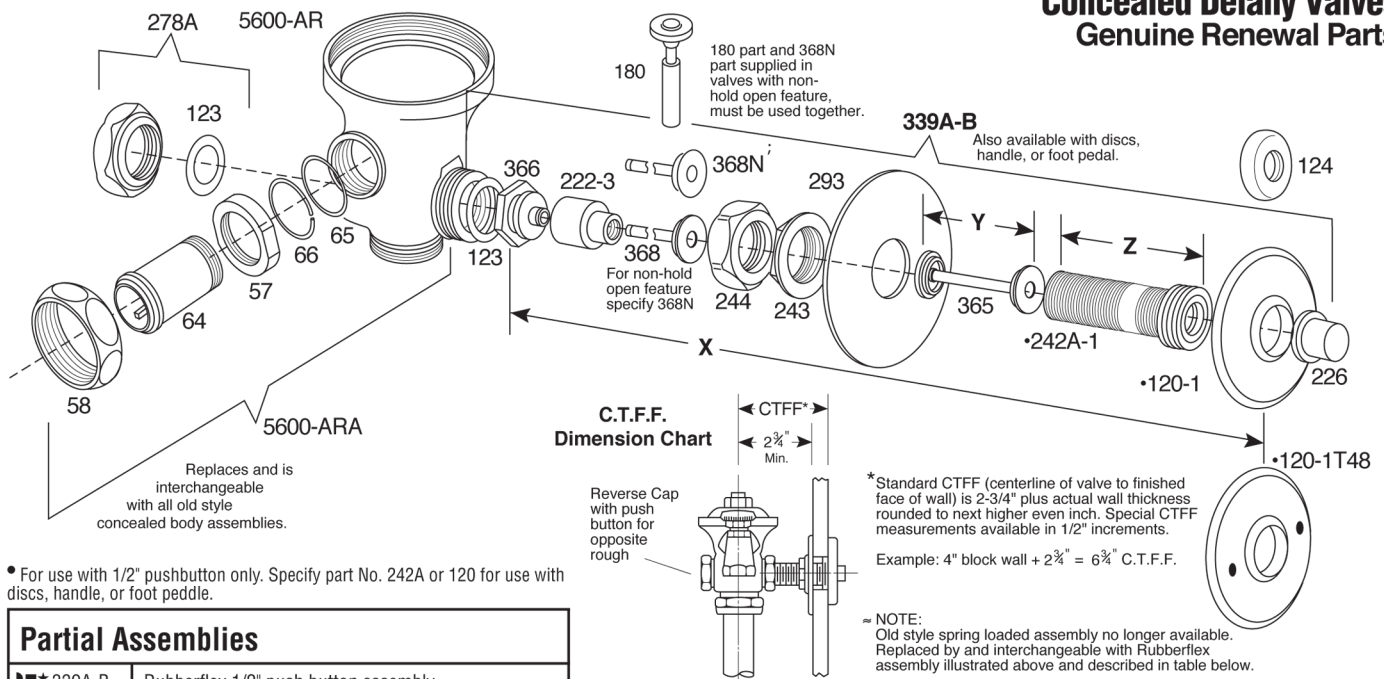


# Concealed Delany Valves Genuine Renewal Parts



• For use with 1/2" pushbutton only. Specify part No. 242A or 120 for use with discs, handle, or foot peddle.

## Partial Assemblies

■ ★ 339A-B	Rubberflex 1/2" push button assembly
■ ★ 339A-C	Rubberflex 3" oscillating disc assembly
■ ★ 339A-T28	Rubberflex handle assembly
■ ★ 339A-T29	Rubberflex foot pedal assembly
5600-ARA	KwikFit concealed valve body assembly (standard length No. 64 part. See table preceding page for special lengths)

## Individual Parts

26	Packing washer
28L	Packing nut
36	Handle
†39	Wall sleeve spacer
57RB	Clamping nut, rough brass
58RB	Union nut, rough brass
★ ★ 64RB	KwikFit union tailpiece, rough brass, 2" standard length overall (allows 4 1/2" to 5 1/2" centers. See table preceding page for special lengths. Supplied complete with No. 65 and No. 66 parts)
65	"O" ring
66	Clamping ring
▶ 120	Wall flange (for use with discs, handle, or foot pedal)
▶ 120-1	Wall flange (for use with 1/2" push button only)
▶ 122	3" Oscillating disc
122T48	3" Oscillating disc (for use with access panel)
123	Washer for coupling nut or handle opening cap
124	Sink flange (for use with 1/2" push button only)
125	Spring
151	Holder for discs
151L	Holding screw for discs (for use with access panel)
151S	Holding screw for discs
152	Retaining ring for holding screw
196	Stud for foot pedal
197FP	Holder for foot pedal
198	Foot pedal
222-3	Flexer
225	1/2" Push button (for use with exposed valves only)
226	1/2" Push button (for use with concealed valves only)

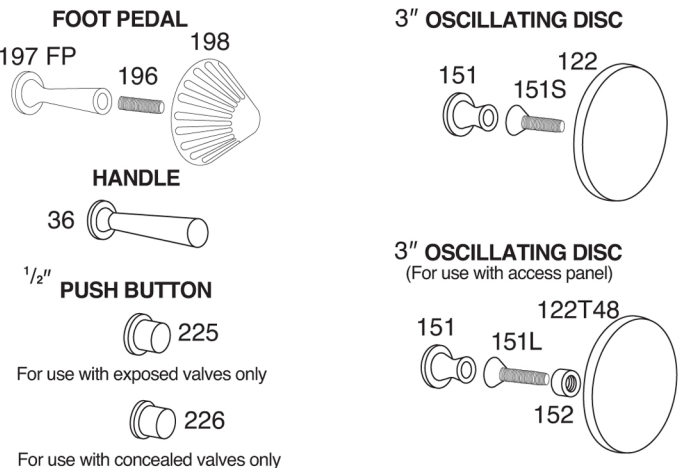
■ If for use with valves containing non hold open feature, add suffix T5 to assembly number. Price remains the same.

★ Specify exact "X" dimension required. Price shown in for 1" wall thickness with "X" dimension of 2 1/8". Add to price shown \$2.35 per inch or fraction thereof above "X" dimension shown.

# Specify exact "Y" dimension required. Price shown is for 1" wall thickness with "Y" dimension of 7/16". Add to price shown \$0.55 per inch or fraction thereof above "Y" dimension shown.

## Actuators for Flushboy Valve

For use with both concealed and exposed valves, except as noted.



## Individual Parts (continued)

§242A	Wall sleeve (for use with discs, handle, or foot pedal)
§242A-1	Wall sleeve (for use with 1/2" push button only)
243	Locknut
244	Coupling nut
245	Operating stem (overall length 2 3/8")
245N	Operating stem (for valves with non hold open feature. Overall length 2 1/4")
278A	Cap for handle opening with No. 123 part
293	Bearing plate
#365	Wall sleeve spacer
366	Wall sleeve bushing
368	Operating stem (overall length 3 1/32")
368N	Operating stem (for valves with non hold open feature. Overall length 2 29/32")
5600-AR	KwikFit concealed valve body only

§ Specify exact "Z" dimension required. Price shown is for 1" wall thickness with "Z" dimension of 2 3/16". Add to price shown \$1.80 per inch or fraction thereof above "Z" dimension shown.

▶ If for use with access panel, add suffix T48 to handle assembly, or part number. Price remains the same.