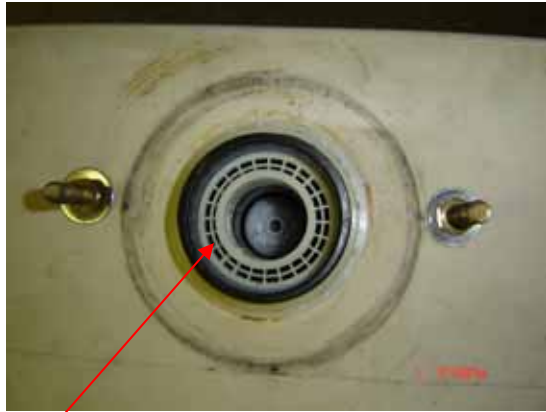


Seal Installation



NO SEAL

FIG A



WITH SEAL

FIG B



FIG C



Flat Side

Instructions:

- 1) Remove tank from bowl no need to remove tank to bowl gasket (not shown) make sure to turn off water and flush to empty vessel. Next remove water supply line from tank and remove nuts that hold down tank.
- 2) Next Drain any water in tank into bowl, next flip over tank to see bottom of drain line (Fig A) if you see no seal like in fig A you must install seal by putting flat side against drain hole (see fig C) and tab facing you. Press down firmly until it lays flat (see fig B).
- 3) Once you have the seal installed (fig B) put tank back onto bowl make sure tank to bowl gasket is on. Tighten down and connect water supply line, and turn on water after it is charged up flush once to see if water comes out of tank.