

S414-3**SABER**

WATER SAVER FLUSH VALVE (3.5gpf / 13.2Lpf Per Flush)

Polished chrome plated flush valve, chloramine resistant Self Cleaning Bypass diaphragm, 3.5 gallons per flush, externally adjustable, with 1" vandle resistant capped screwdriver angle stop with back-check, sweat adapter kit, renewable main valve seat, metal "Rubberflex" oscillating handle, "Turn-to-Silence" equipment, with Slip-Joint adjustable tailpiece, vacuum breaker, wall flange, spud nut and spud flange for 1½" top spud.



T36—Solid ring wall support for flush connection



T46—Split ring wall support for flush connection



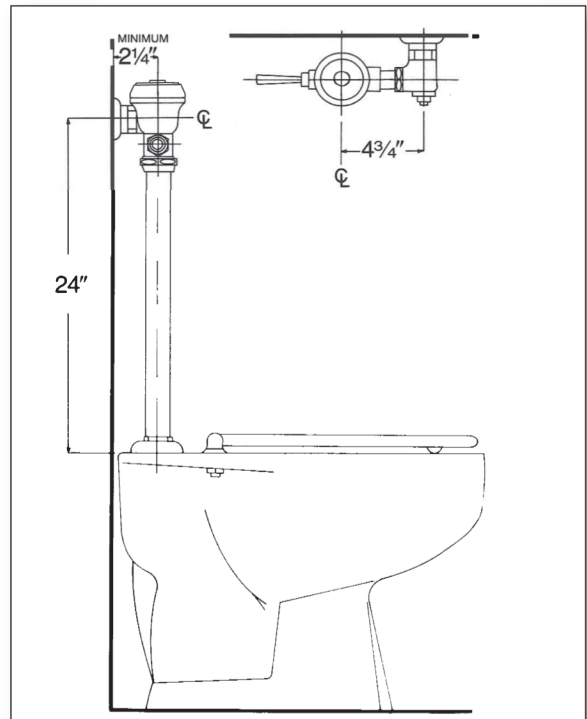
Variations

- ☐ AM – Antimicrobial Coated Handle
- ☐ SH – SmartHandle Dual-Flush with Antimicrobial Coating. A DOWN stroke of the handle produces a full 3.5gpf /13.2Lpf for the complete elimination of all waste. An UP stroke of the handle results in a minimum of 30% water savings to eliminate liquid and paper
- ☐ T5 – Non-Hold-Open Feature
- ☐ T6 – Wall flange with allen set screw
- ☐ T36 – Solid ring wall support for flush connection
- ☐ T46 – Split ring wall support for flush connection

Remarks

*** For use with 3.5 gallons water saver water closet**

Valve Body, Cover, Tailpiece and Control Stop shall be in conformance with ASTM Alloy Classification for Semi-Red Brass. Valve shall be in compliance to the applicable sections of ASSE 1037.



P.O. Box 411 • Charlottesville • VA • 22902 • USA
Phone: (434) 296-0166 • Fax (434) 977-3596
Email: info@delanyproducts.com
Web: www.delanyproducts.com
©2014

