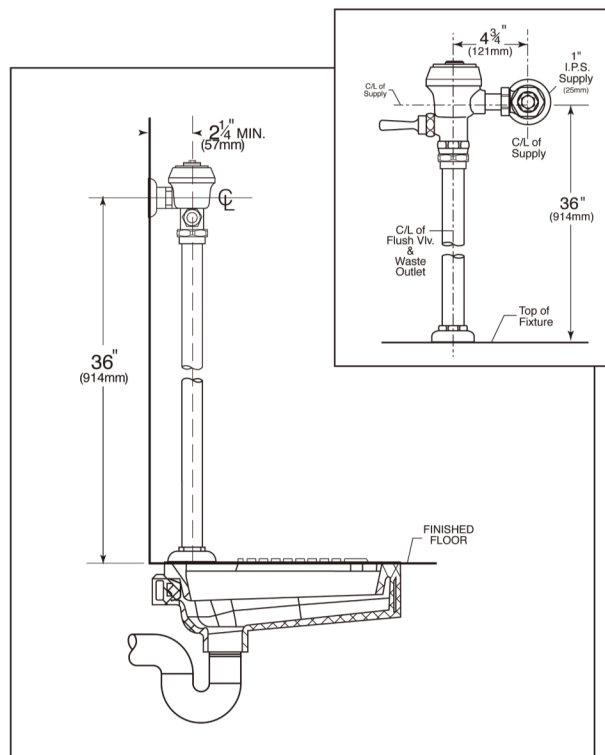
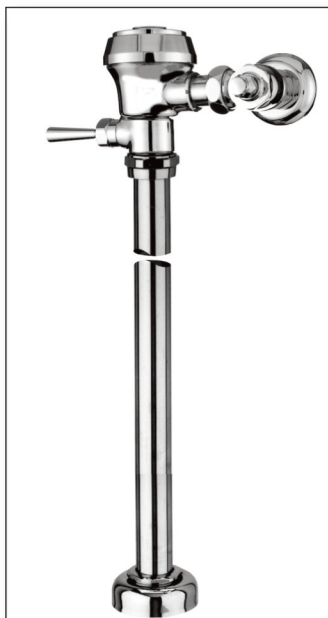


S474-1.6**SABER**

Polished chrome plated flush valve, diaphragm type, type, with non-hold-open equipment, 1.6 gpf / 6.0 Lpf, self cleaning bypass orifice, chloramines resistant rubber parts, with 1" vandal resistant capped screwdriver angle stop with back-check, ADA compliant metal "Rubberflex" oscillating handle, Slip Joint adjustable tailpiece, vacuum breaker, wall flange, spud nut and flange for 1-1/2" exposed top spud squat toilet.

Variations

- ☐ T6 – Heavy cast wall flange with allen head set screw
- ☐ T36 – Solid ring wall support for flush connection
- ☐ T42 – Sweat adapter kit for stop
- ☐ T46 – Split ring wall support for flush connection

Remarks

P.O. Box 411 • Charlottesville • VA • 22902 • USA
 Phone: (434) 296-0166 • Fax (434) 977-3596
 Email: info@delanyproducts.com
 Web: www.delanyproducts.com
 ©2015

